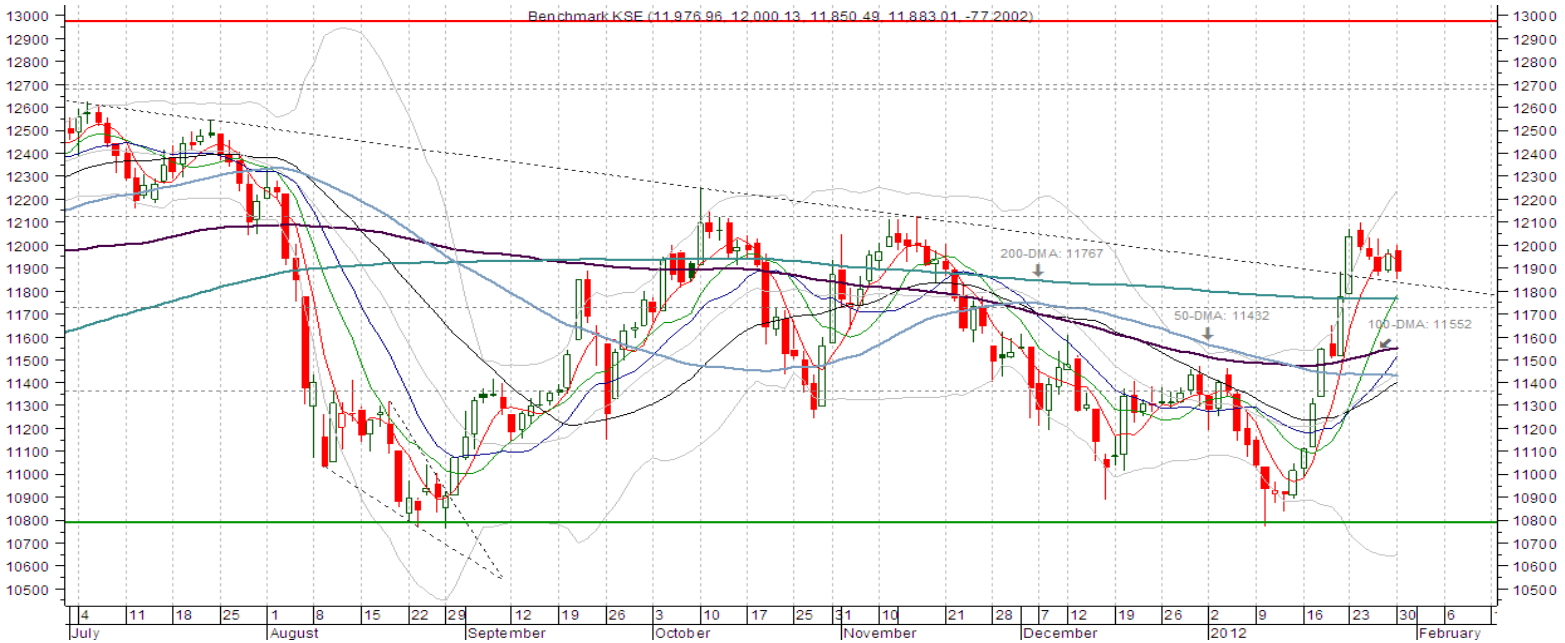




KSE 100-INDEX

CLOSE	HIGH	LOW	CHANGE	14-day RSI	50-DMA	100-DMA	200-DMA
11,883.01	12,000.13	11,850.49	-77.20 / (0.64%)	63.32	11,432.85	11,552.52	11,767.00



Positive Theme

Despite a minute intra-day violation, the index managed to hold its immediate support around 11869 level yesterday. Recovery can be anticipated towards 12097~12133 area. Failure to sustain 11869 would expose deeper support within 11782~11766 levels. Keeping faith with encouraging signals on weekly momentum data (MACD, RSI, STS), and short-term base intact in 11685~11500, we continue to aim for strength towards 12466 and 12764 levels. Traders are suggested to capitalize at weakness. Preferred stocks include PSO, OGDC, ENGRO, NML, PTC, DGKC, UBL, NBP, and MCB.

SUPPORT LEVELS

- S1: 11,869
- S2: 11,782~11,766
- S3: 11,728

RESISTANCE LEVELS

- R1: 11,967
- R2: 12,097
- R3: 12,281

Technical Profile

Immediate: Neutral to Positive
Short-term: Positive

Strategy: Buy at Weakness

OGDC (151.84)	Friday's impulse base in 149.02~147.65 is expected to carry the stock towards 154.84 and 157.07.
POL (359.9)	Hold with risk below 352. Immediate supply at 163.75. Strength past 375.5 would scope for 387.25~390.
PSO (257.65)	Aim for 275.09~287.38 (revised). Nearby support and resistance at 247.59 and 262.79 respectively.
ENGRO (117.13)	Immediate break above 118.37 would invite interest towards 122.51 and 126.64. On the downside, weakness through 113.26 would expose internal risk for correction towards 110.11 and 107.55. Short-term base in 107.5~105.
PTC (11.51)	Could progress towards 12.09 and 12.67, with immediate base support in 11.33~11.15 (risk).
MCB (169.87)	Residency above 164.75~163 continues to paint a positive technical picture. Aim for 172.16 and 177.82.
UBL (57.6)	Nearby support at 55.50. Short-term strength suspected towards 58.27 and 62.76
LUCK (86.00)	Strength anticipated towards 90.22~92.47 with short-term base in 82.09~80.70. Internal supply at 87.97.
DGKC (22.99)	Needs to overcome 23.43 to refresh the momentum towards 24.20 and 24.97. Slippage below 22.48 could expose 21.9 and 21.42. The short-term technical picture would remain positive above 20.95.

StockSnap

Ticker	Close	Previous Close	% Chg	Volume	RSI(14)	5-DMA	10-DMA	15-DMA	30-DMA	50-DMA	100-DMA	200-DMA	250-Day High	250-Day Low	Minor-Trend	Daily PIVOTS						
																S1	S2	S3	PIVOT	R1	R2	R3
AICL	49.29	49.65	(0.73)	12,628	54.68	50.82	50.53	49.45	47.45	45.77	47.73	54.61	93.90	38.82	Positive	48.87	48.44	47.88	49.43	49.86	50.42	50.85
ABL	60.47	61.03	(0.92)	48,006	61.56	60.86	59.35	57.79	56.88	57.68	60.06	60.15	66.99	51.18	Positive	59.88	59.29	58.58	60.59	61.18	61.89	62.48
ATRL	117.34	120.96	(2.99)	1,417,772	56.66	120.72	117.39	114.11	111.83	113.63	114.77	118.75	141.58	96.25	Positive	115.60	113.86	110.71	118.75	120.49	123.64	125.38
ANL	3.16	3.39	(6.78)	927,803	46.90	3.50	3.44	3.25	3.16	3.24	3.90	4.89	12.12	2.75	Positive	3.05	2.93	2.74	3.24	3.36	3.55	3.67
BAHL	31.48	32.49	(3.11)	447,129	63.82	32.07	31.28	30.51	29.45	29.37	29.52	29.16	32.90	26.88	Positive	30.75	30.01	29.11	31.65	32.39	33.29	34.03
BAFL	12.36	12.23	1.06	3,157,593	70.17	12.25	11.97	11.75	11.58	11.65	11.26	10.73	12.65	8.75	Positive	12.06	11.75	11.56	12.25	12.56	12.75	13.06
DGKC	22.99	23.26	(1.16)	3,288,021	75.32	22.93	21.86	21.16	20.19	20.14	20.61	21.68	28.54	17.90	Positive	22.71	22.42	22.01	23.12	23.41	23.82	24.11
EFUG	38.74	40.72	(4.86)	14,778	51.06	40.16	39.63	39.41	37.84	37.24	36.50	35.21	42.00	29.01	Positive	38.21	37.68	36.66	39.23	39.76	40.78	41.31
ENGRO	117.13	117.24	(0.09)	3,928,952	69.47	115.99	110.25	105.27	100.76	107.27	118.60	141.57	204.40	90.25	Positive	115.76	114.39	112.27	117.88	119.25	121.37	122.74
FFC	187.08	186.17	0.49	12,947,112	76.30	180.50	175.40	170.48	162.38	162.23	164.44	151.08	194.90	93.25	Positive	184.41	181.74	178.47	187.68	190.35	193.62	196.29
FFBL	46.36	48.18	(3.78)	4,499,824	48.07	48.47	47.85	46.31	45.61	47.70	51.31	44.70	61.30	28.85	Positive	45.58	44.79	43.39	46.98	47.77	49.17	49.96
HBL	114.11	114.82	(0.62)	12,921	61.07	115.21	112.80	110.65	109.33	110.28	112.49	114.43	123.80	95.23	Positive	113.61	113.10	112.21	114.50	115.01	115.90	116.41
HMB	17.1	17.69	(3.34)	41,168	46.07	17.74	17.48	17.33	17.07	17.08	17.57	18.08	22.67	15.66	Positive	17.03	16.95	16.81	17.17	17.25	17.39	17.47
HUBC	35.5	35.83	(0.92)	530,731	56.87	35.79	35.17	34.66	34.55	35.30	36.45	35.70	40.76	30.40	Positive	35.32	35.14	34.83	35.63	35.81	36.12	36.30
ICI	139.2	145.93	(4.61)	17,043	56.06	145.20	144.13	139.82	129.82	127.81	132.68	140.41	157.50	111.11	Positive	135.58	131.97	125.28	142.27	145.88	152.57	156.18
INDU	220.5	221.06	(0.25)	681	64.58	221.67	217.43	215.40	210.56	207.44	204.06	205.73	292.00	182.00	Positive	219.67	218.83	217.17	221.33	222.17	223.83	224.67
JSCL	5.3	5.64	(6.03)	6,501,102	54.60	5.88	5.55	5.08	4.60	4.86	5.24	6.04	12.05	3.90	Positive	5.12	4.95	4.64	5.43	5.60	5.91	6.08
KAPCO	41.87	41.82	0.12	54,908	63.69	41.86	41.18	40.75	40.77	40.97	41.34	40.20	44.88	34.50	Positive	41.58	41.29	41.08	41.79	42.08	42.29	42.58
LUCK	86	87.03	(1.18)	1,390,264	69.65	86.05	83.72	81.72	79.51	79.70	78.24	72.91	88.47	55.55	Positive	85.03	84.06	82.60	86.49	87.46	88.92	89.89
MCB	169.87	167.46	1.44	754,628	77.11	168.71	162.45	157.35	148.93	148.38	156.69	173.11	204.27	133.00	Positive	165.38	160.89	157.53	168.74	173.23	176.59	181.08
MARI	88.92	90.45	(1.69)	54,041	53.67	90.94	89.06	87.89	85.93	87.77	88.84	84.89	104.59	66.20	Positive	87.62	86.32	84.53	89.41	90.71	92.50	93.80
MEBL	21.95	22.7	(3.30)	19,721	65.64	22.11	21.21	20.30	19.18	19.08	19.33	18.22	23.00	13.87	Positive	21.58	21.21	20.65	22.14	22.51	23.07	23.44
NRL	236.81	245.54	(3.56)	372,509	46.71	242.97	239.41	233.80	235.46	248.42	292.94	310.55	374.00	215.00	Positive	231.54	226.27	217.54	240.27	245.54	254.27	259.54
NBP	43.45	44.1	(1.47)	1,841,461	52.43	44.51	43.48	43.16	42.63	42.21	43.55	47.26	59.42	34.86	Positive	43.03	42.62	41.93	43.72	44.13	44.82	45.23
NIB	1.64	1.68	(2.38)	1,020,039	52.30	1.69	1.68	1.68	1.62	1.50	1.45	1.53	2.99	1.21	Positive	1.56	1.47	1.40	1.63	1.72	1.79	1.88
NML	45.78	46.79	(2.16)	316,475	64.27	46.45	45.04	43.58	42.29	42.01	43.46	46.98	65.00	34.80	Positive	45.20	44.63	43.65	46.18	46.75	47.73	48.30
OGDC	151.84	152.12	(0.18)	474,619	56.67	150.72	150.24	145.41	147.60	149.79	142.45	141.56	170.30	115.15	Positive	150.39	148.95	147.39	151.95	153.39	154.95	156.39
PKGS	79.51	79.57	(0.08)	2,325	48.45	79.13	79.01	79.01	79.91	80.35	89.28	99.00	139.75	68.01	Positive	78.17	76.84	75.92	79.09	80.42	81.34	82.67
POL	359.9	364.69	(1.31)	1,058,779	53.75	364.08	362.48	356.87	353.98	355.41	352.74	337.49	376.25	252.09	Positive	357.43	354.97	350.93	361.47	363.93	367.97	370.43
PAKRI	16.37	16.42	(0.30)	119,953	59.69	16.51	16.45	16.24	15.74	15.52	15.61	15.63	18.30	10.80	Positive	16.06	15.76	15.39	16.43	16.73	17.10	17.40
PSO	257.65	254.61	1.19	958,958	70.73	253.74	248.87	244.24	238.05	239.60	242.72	252.13	298.00	202.50	Positive	253.30	248.95	244.90	257.35	261.70	265.75	270.10
PAKT	53	53	-	5,559	34.25	52.83	52.49	52.89	55.15	58.84	70.59	85.15	124.40	0.00	Negative	52.99	52.99	52.98	53.00	53.00	53.01	53.01
PPL	177.01	178.21	(0.67)	204,864	59.28	178.56	176.45	172.59	170.97	171.63	178.00	181.54	198.95	160.00	Positive	175.84	174.67	172.84	177.67	178.84	180.67	181.84
PTC	11.51	11.56	(0.43)	194,529	68.50	11.59	11.30	10.95	10.53	10.48	10.88	12.43	17.85	9.82	Positive	11.41	11.30	11.20	11.51	11.62	11.72	11.83
SNGP	15.99	16.09	(0.62)	48,830	47.18	16.01	16.04	15.98	15.98	16.37	16.98	17.15	25.70	14.34	Positive	15.79	15.60	15.34	16.05	16.24	16.50	16.69
UBL	57.6	56.47	2.00	921,667	60.62	57.53	56.16	55.10	54.28	55.19	56.57	58.51	64.45	51.01	Positive	56.40	55.20	54.35	57.25	58.45	59.30	60.50

**Minor-Trend signals are based on the 5,10, and 15 day moving averages crossover system